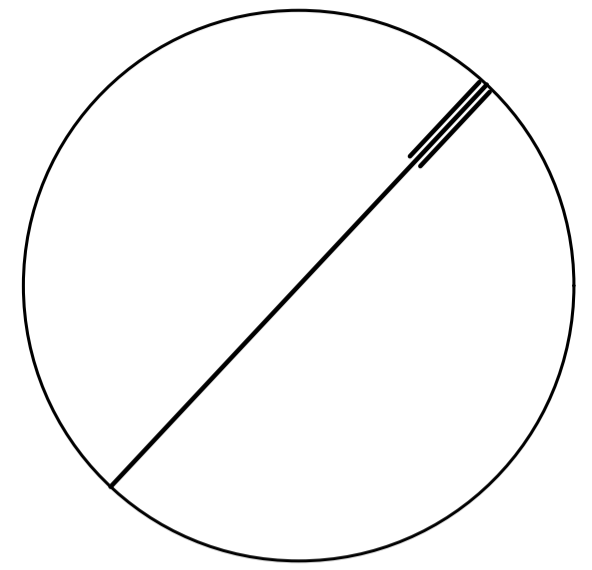


QUADRO DE ÁREAS	
AMBIENTE	METRAGEM QUADRADA
TERRENO	4711
SUBSOLO	1854
TÉRREO	1854
GARAGEM	1854
P.U.C.	1102
PAV. TIPO	1005
COBERTURA	286

SOMATÓRIO	20015m ²
ÁREA DE PROJEÇÃO	2052m ² / 43,6%

1 IMPLANTAÇÃO
ESCALA 1:250



RUA MARIO ALVES

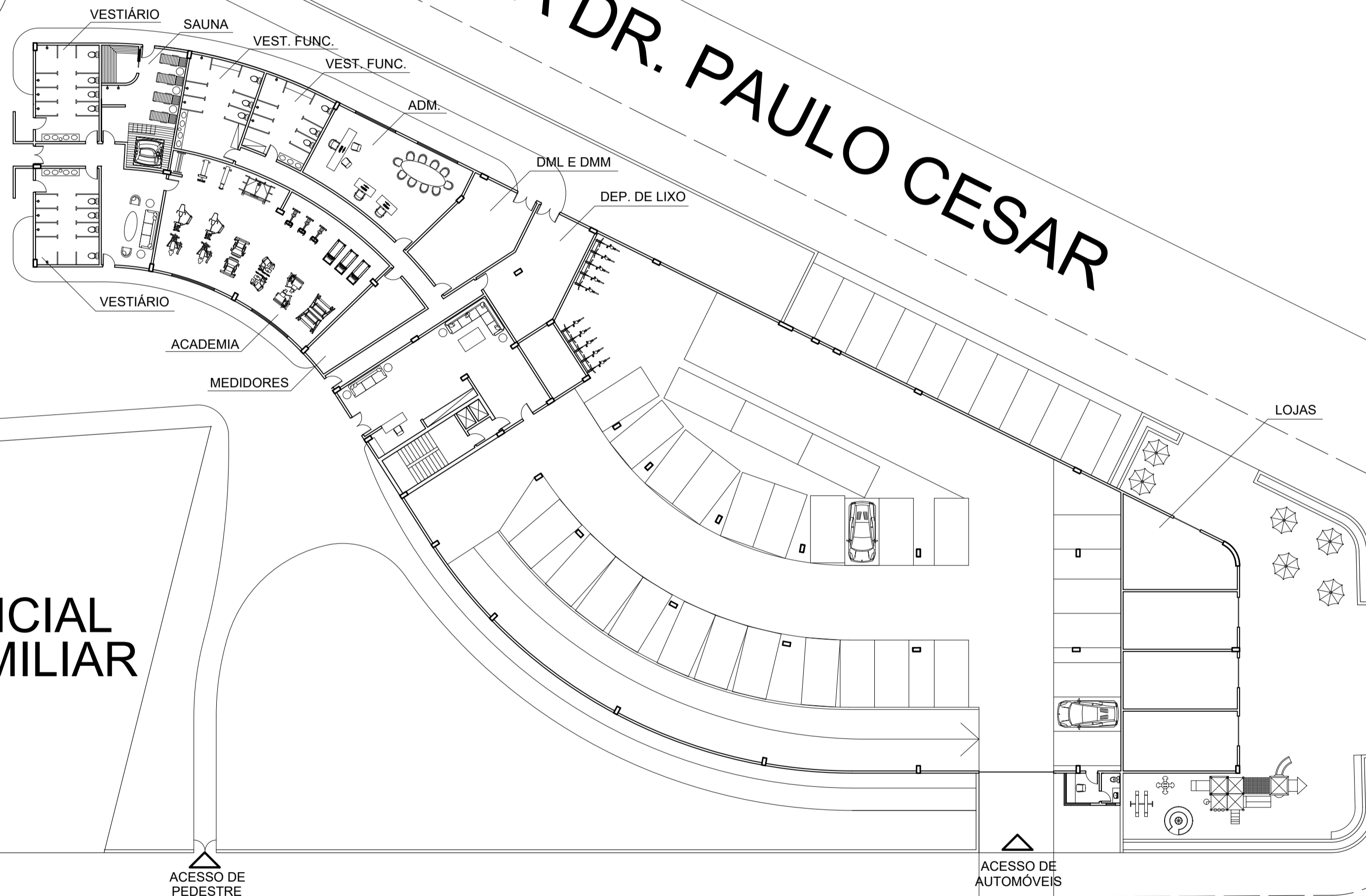
RUA DR. PAULO CESAR

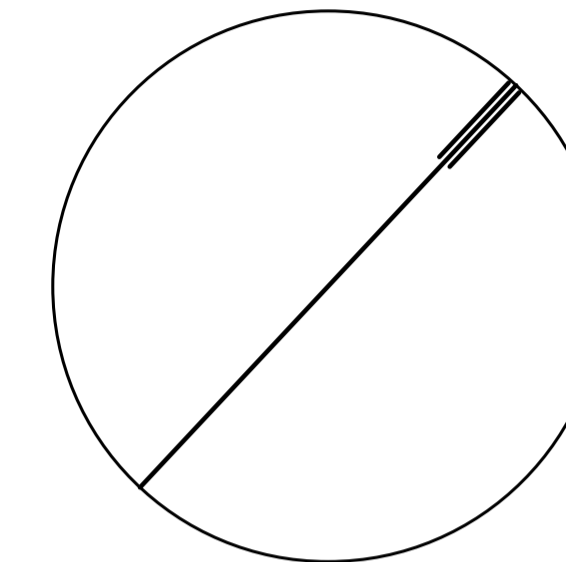
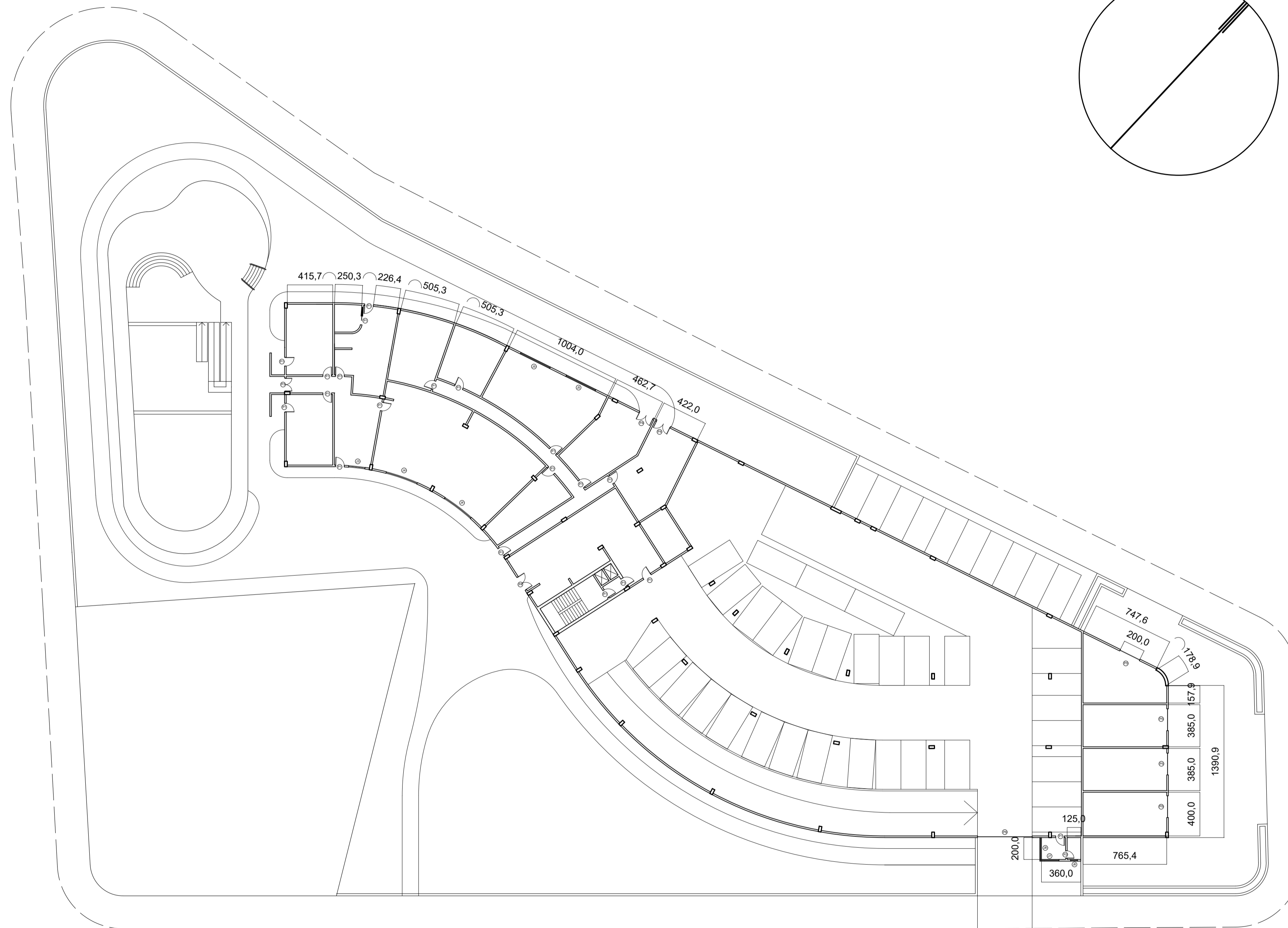
RUA ST. DUMONT

RESIDENCIAL
MULTIFAMILIAR

PÇ DOS
ESCOTEIROS

RUA GAL. PEREIRA DA SILVA



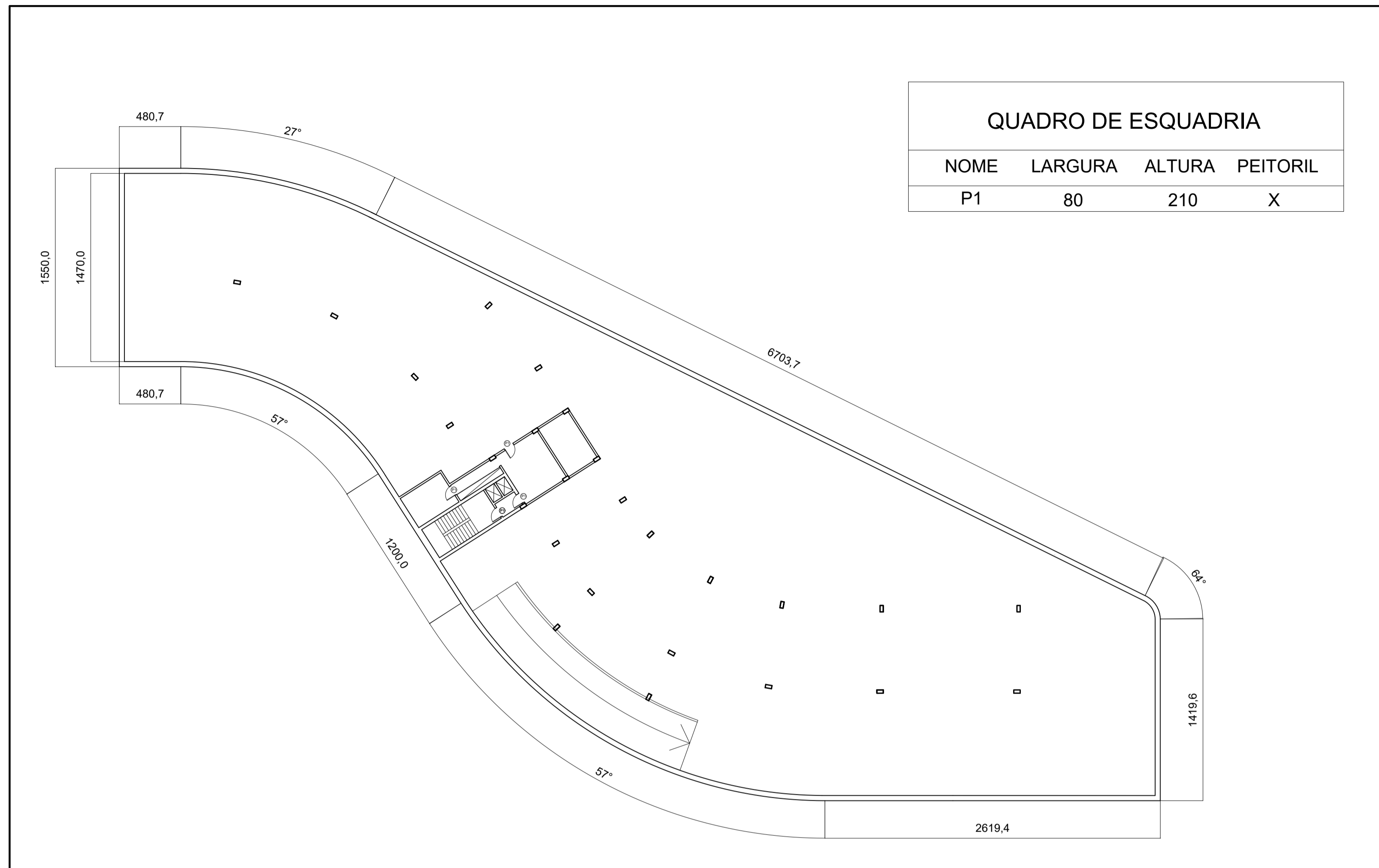


QUADRO DE ESQUADRIA

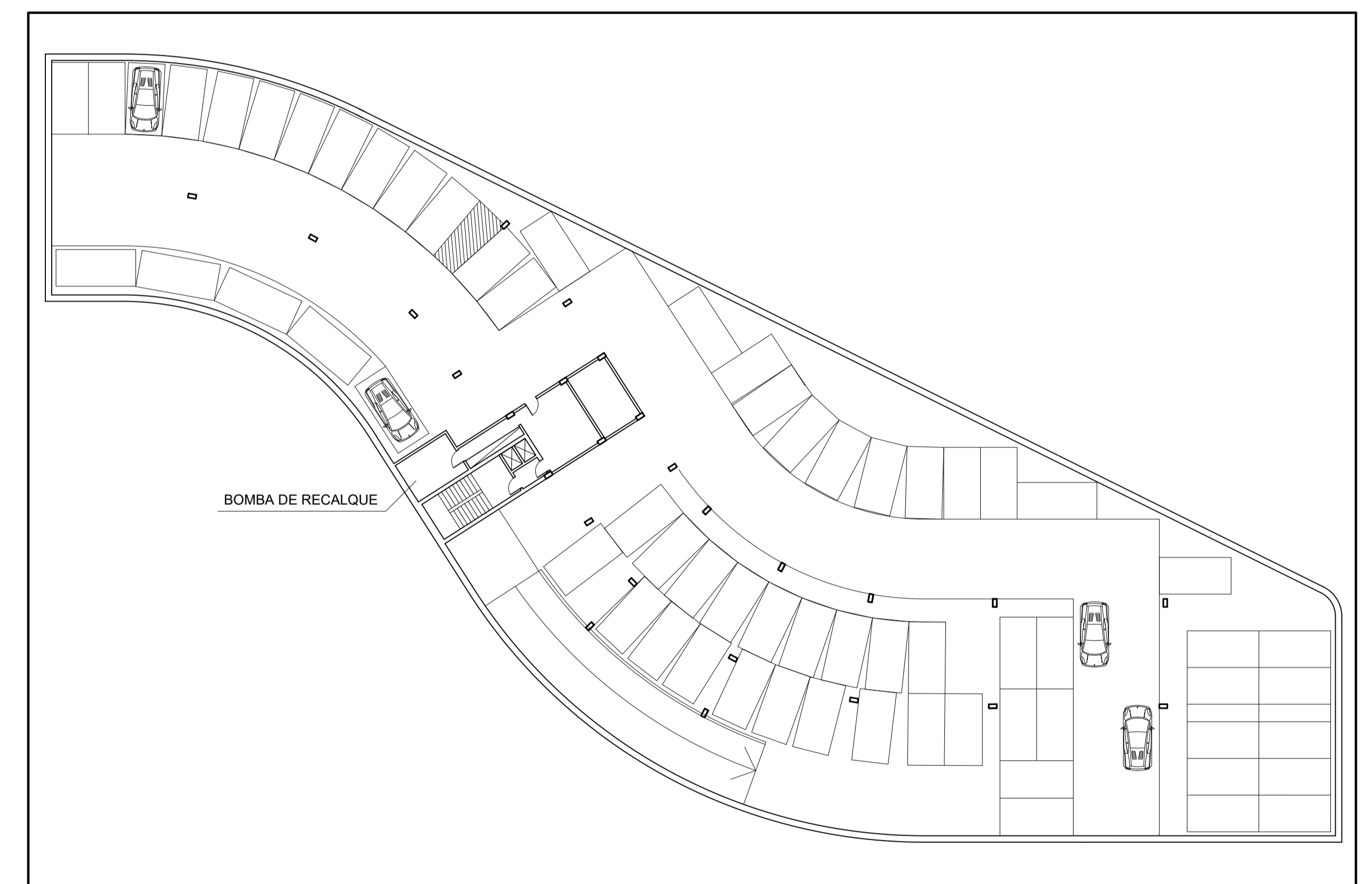
NOME	LARGURA	ALTURA	PEITORIL
P1	80	210	X
P2	70	210	X
P3	120	210	X
P4	140	210	X
P5	200	250	X
P9	500	250	X
J3	150	160	90
J4	300	160	90
J5	300	120	90
J6	60	60	150
J7	165	120	90
J8	208	120	90

VAGAS DE AUTOMÓVEL

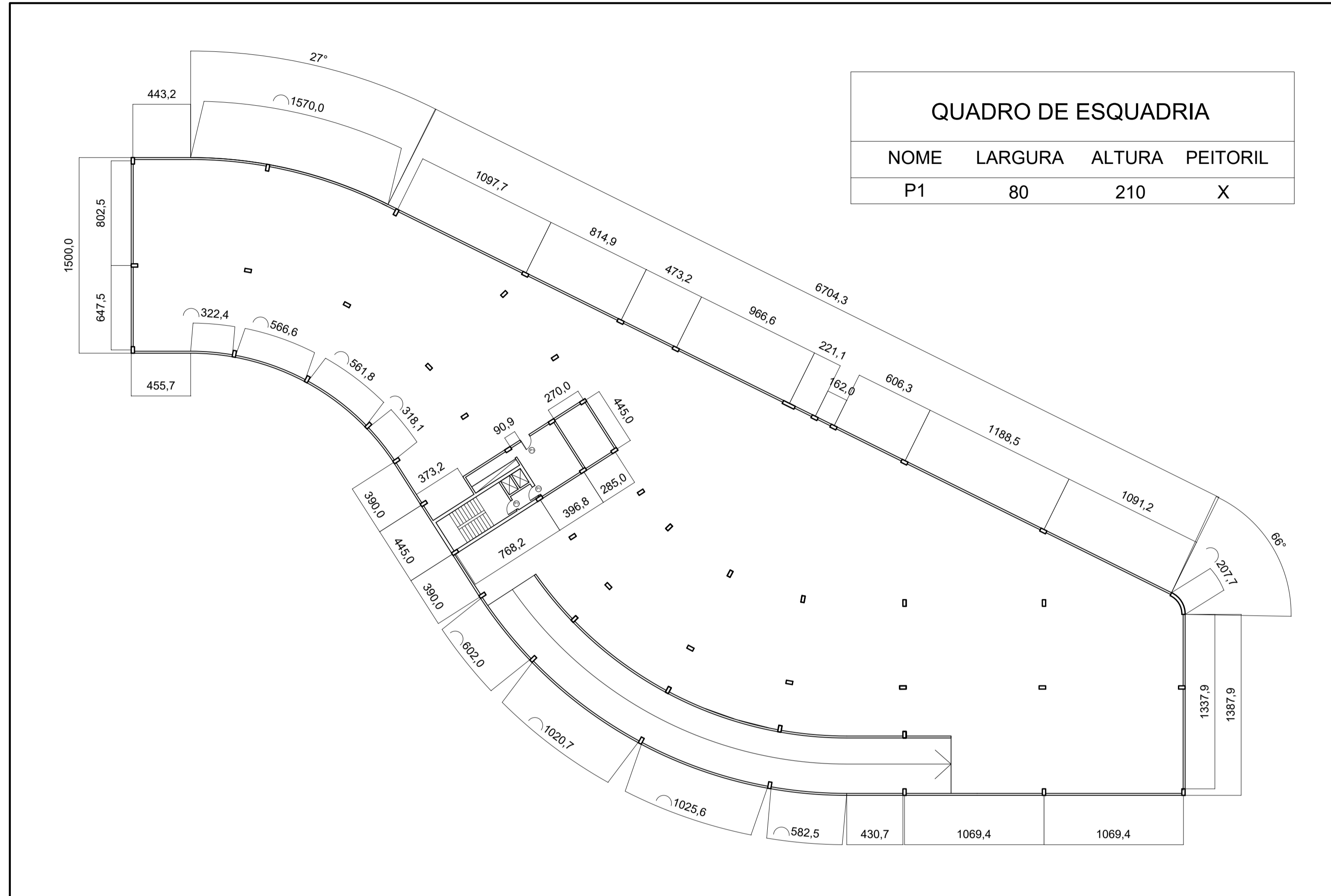
2 APS. DE APROX. 140m ²	2*2*13 = 52
4 APS. DE APROX. 100m ²	4*1,5*13 = 78
2 APS. DE APROX. 70m ²	2*1*13 = 26
+2% DE VAGAS PARA PCD	
TOTAL = 160 VAGAS	



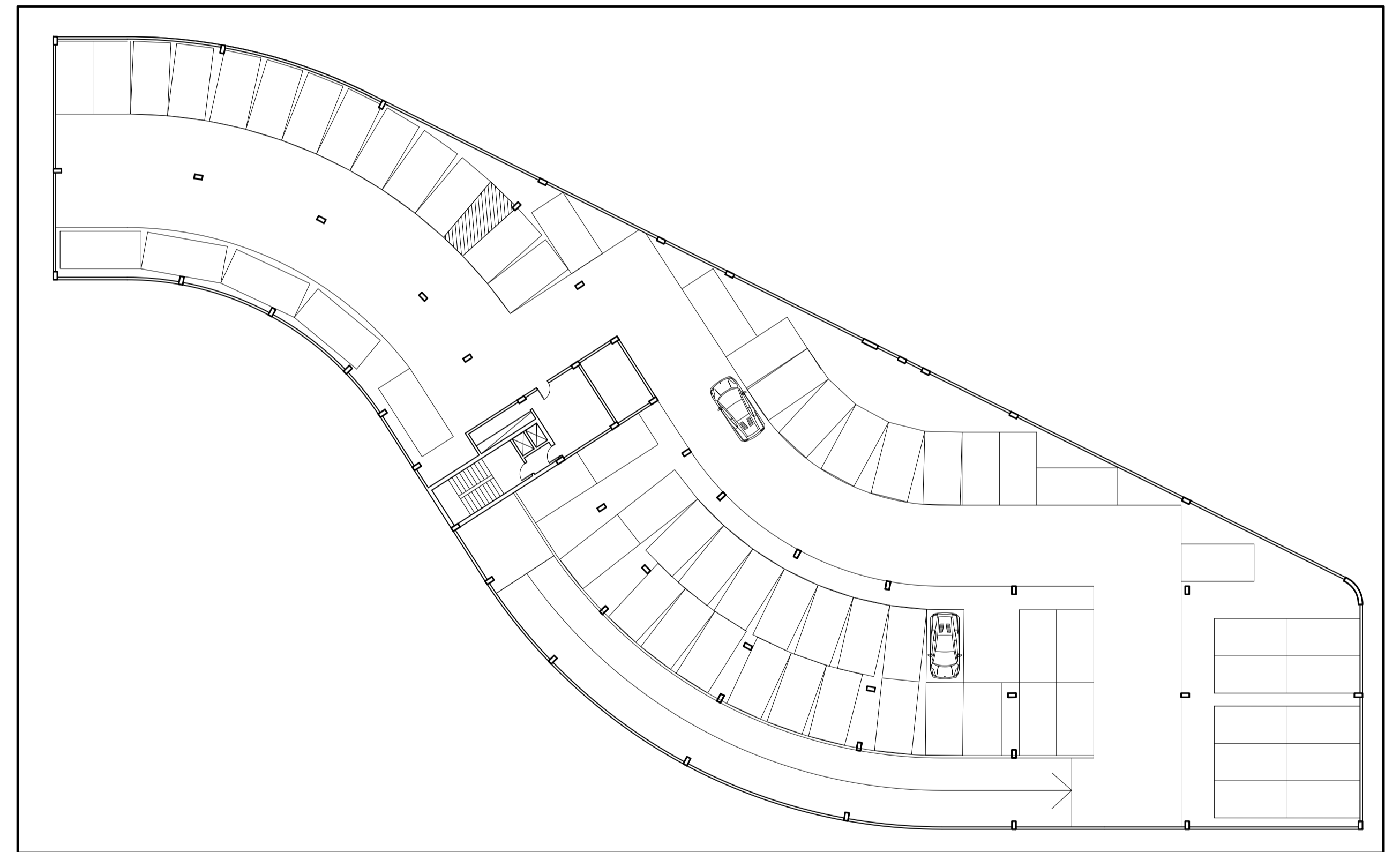
1 PLANTA SUBSOLO COTADA
ESCALA 1:250



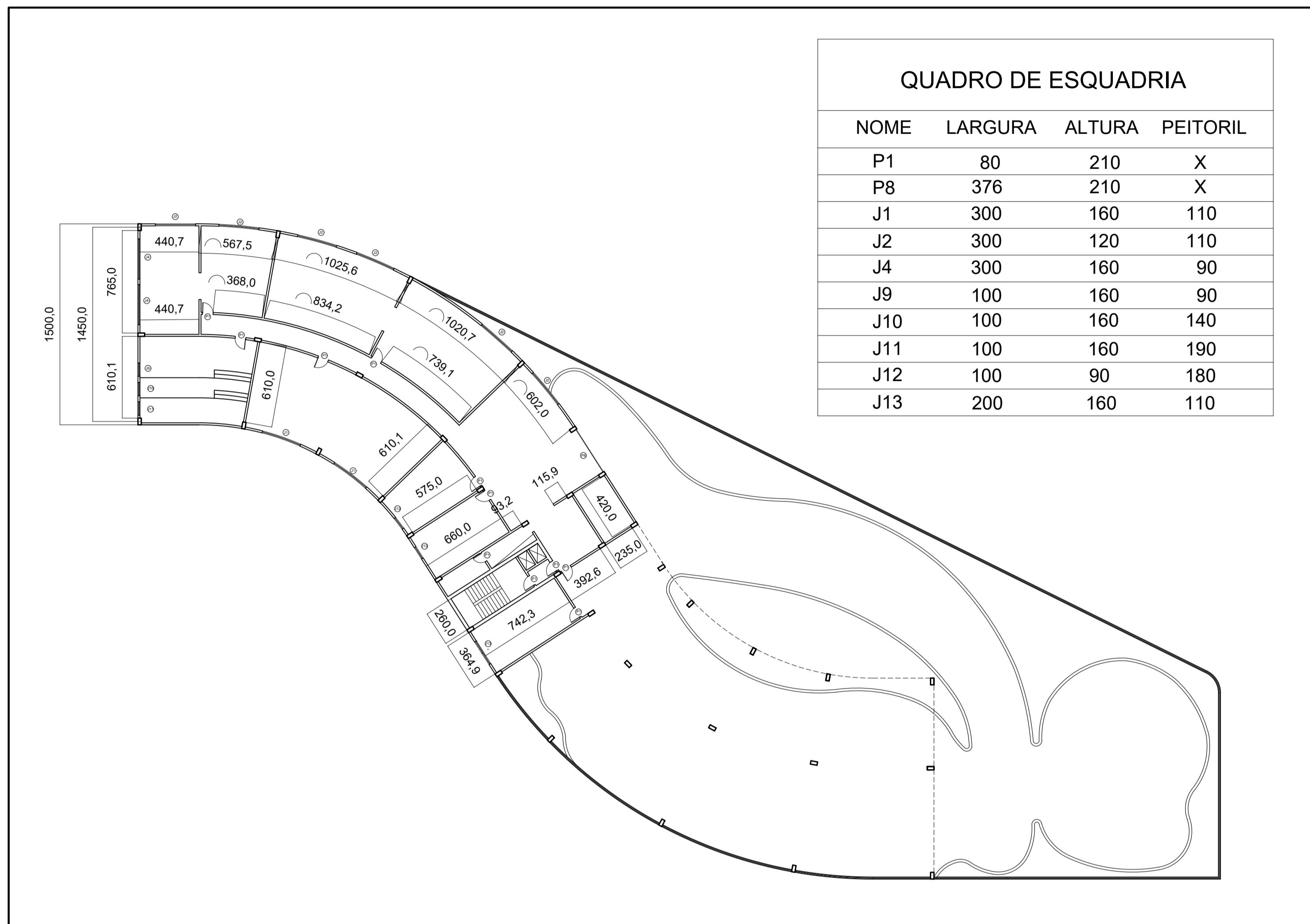
2 PLANTA SUBSOLO
ESCALA 1:250



1 PLANTA GARAGEM COTADA
ESCALA 1:250



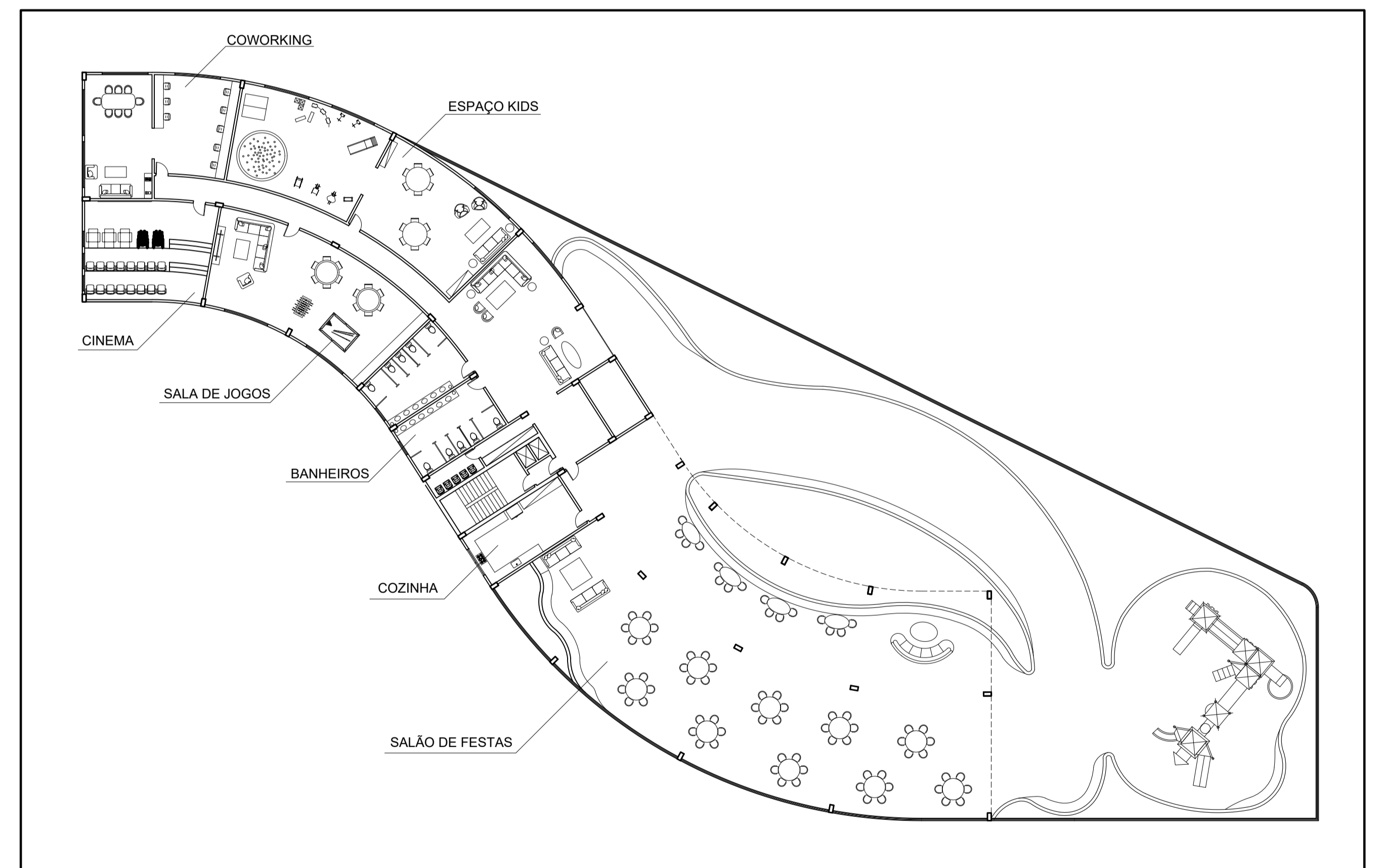
2 PLANTA GARAGEM
ESCALA 1:250



QUADRO DE ESQUADRIA

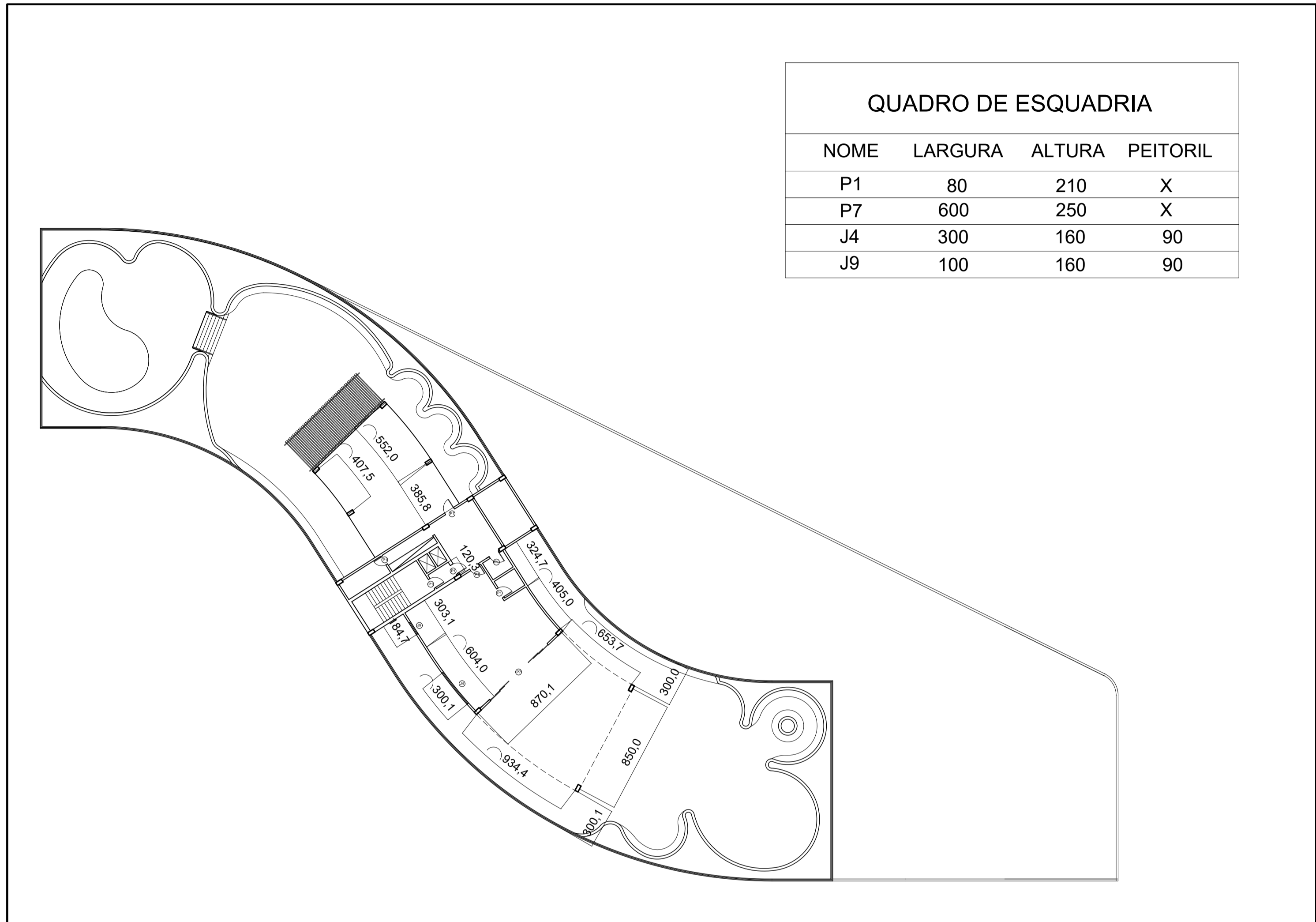
NOME	LARGURA	ALTURA	PEITORIL
P1	80	210	X
P8	376	210	X
J1	300	160	110
J2	300	120	110
J4	300	160	90
J9	100	160	90
J10	100	160	140
J11	100	160	190
J12	100	90	180
J13	200	160	110

1 PLANTA P.U.C. COTADA
ESCALA 1:250

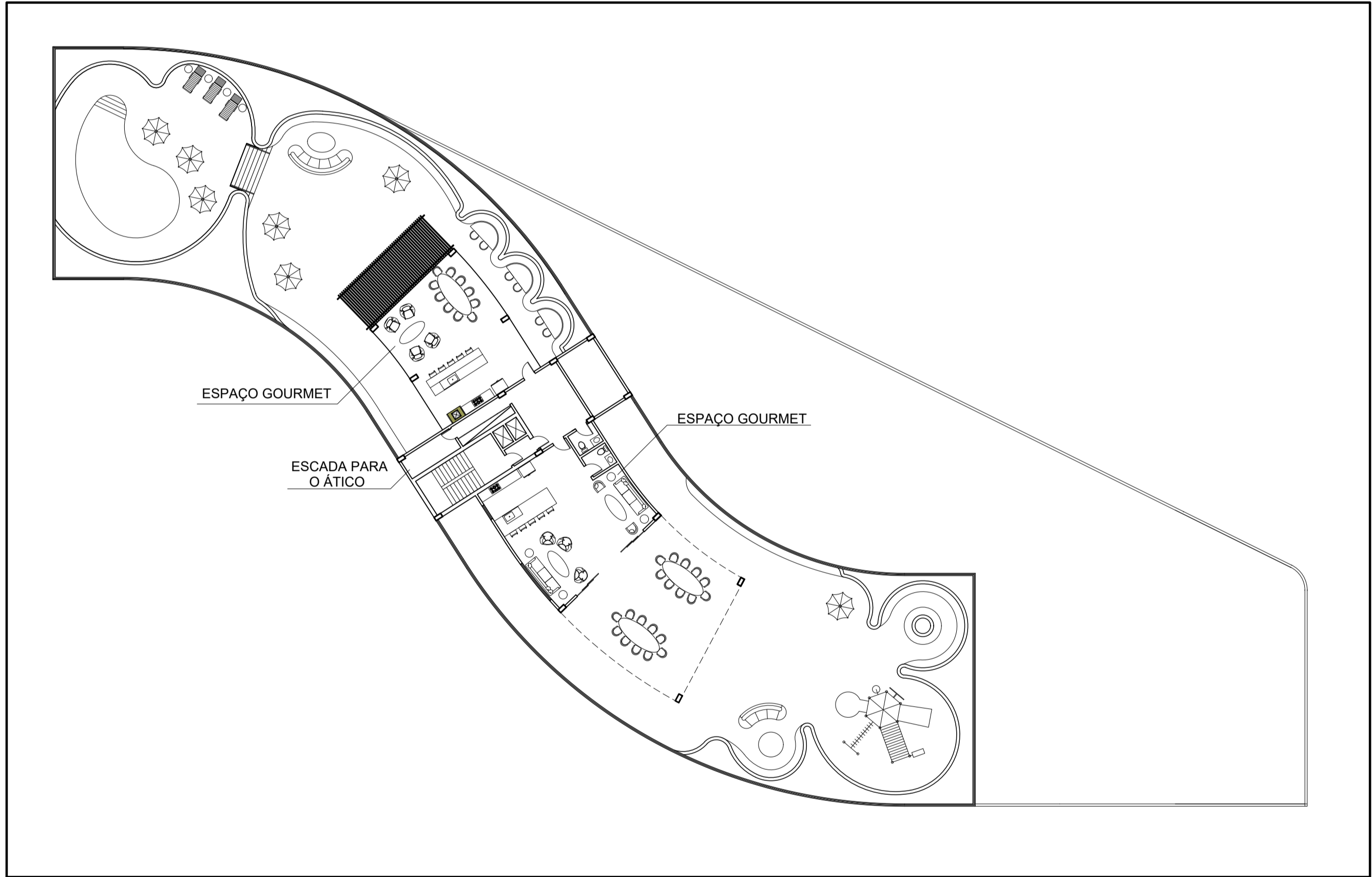


2 PLANTA P.U.C.
ESCALA 1:250

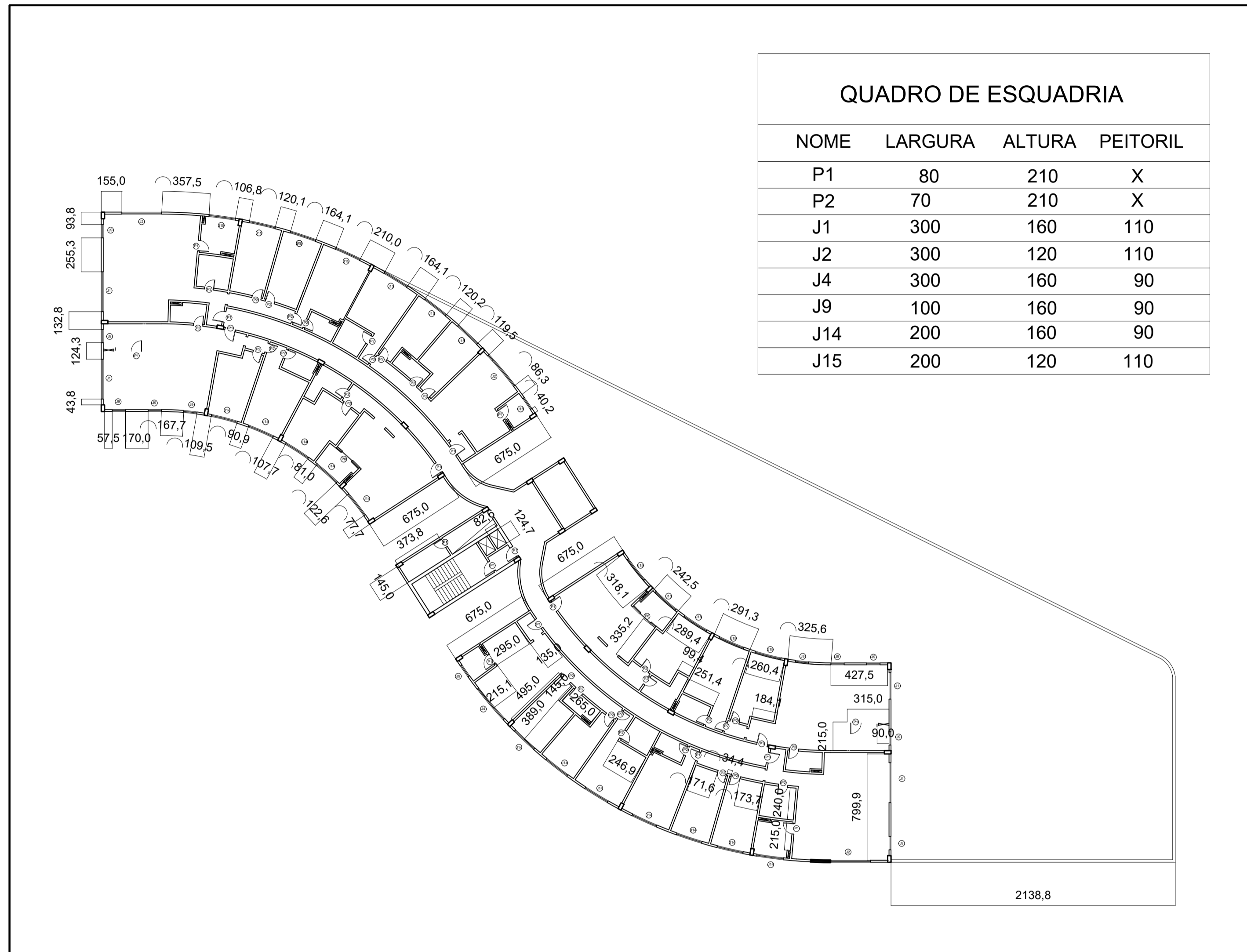
QUADRO DE ESQUADRIA			
NOME	LARGURA	ALTURA	PEITORIL
P1	80	210	X
P7	600	250	X
J4	300	160	90
J9	100	160	90



1 COBERTURA COTADA
ESCALA 1/250



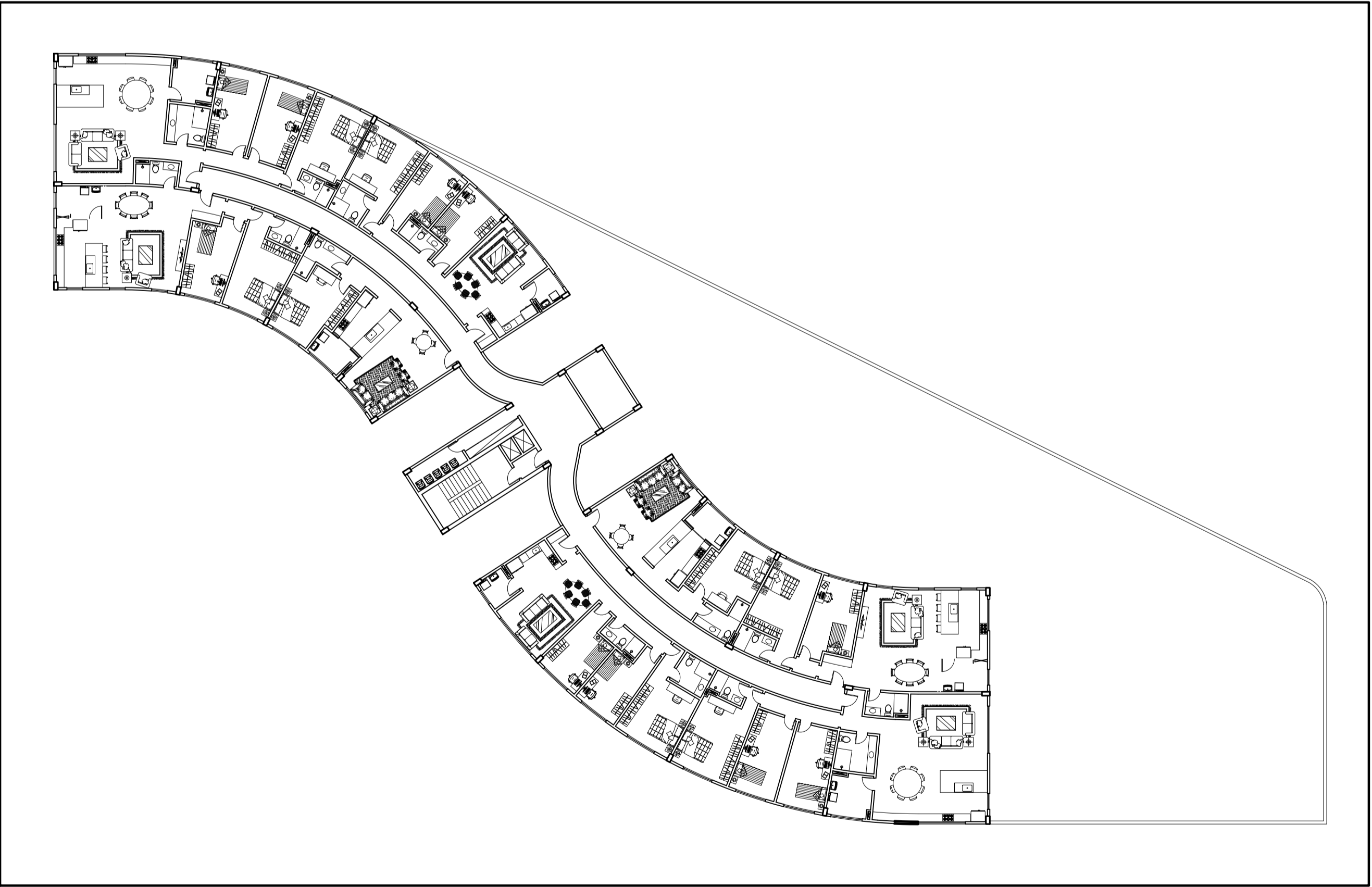
2 COBERTURA MOBILIADA
ESCALA 1/250



QUADRO DE ESQUADRIA

NOME	LARGURA	ALTURA	PEITORIL
P1	80	210	X
P2	70	210	X
J1	300	160	110
J2	300	120	110
J4	300	160	90
J9	100	160	90
J14	200	160	90
J15	200	120	110

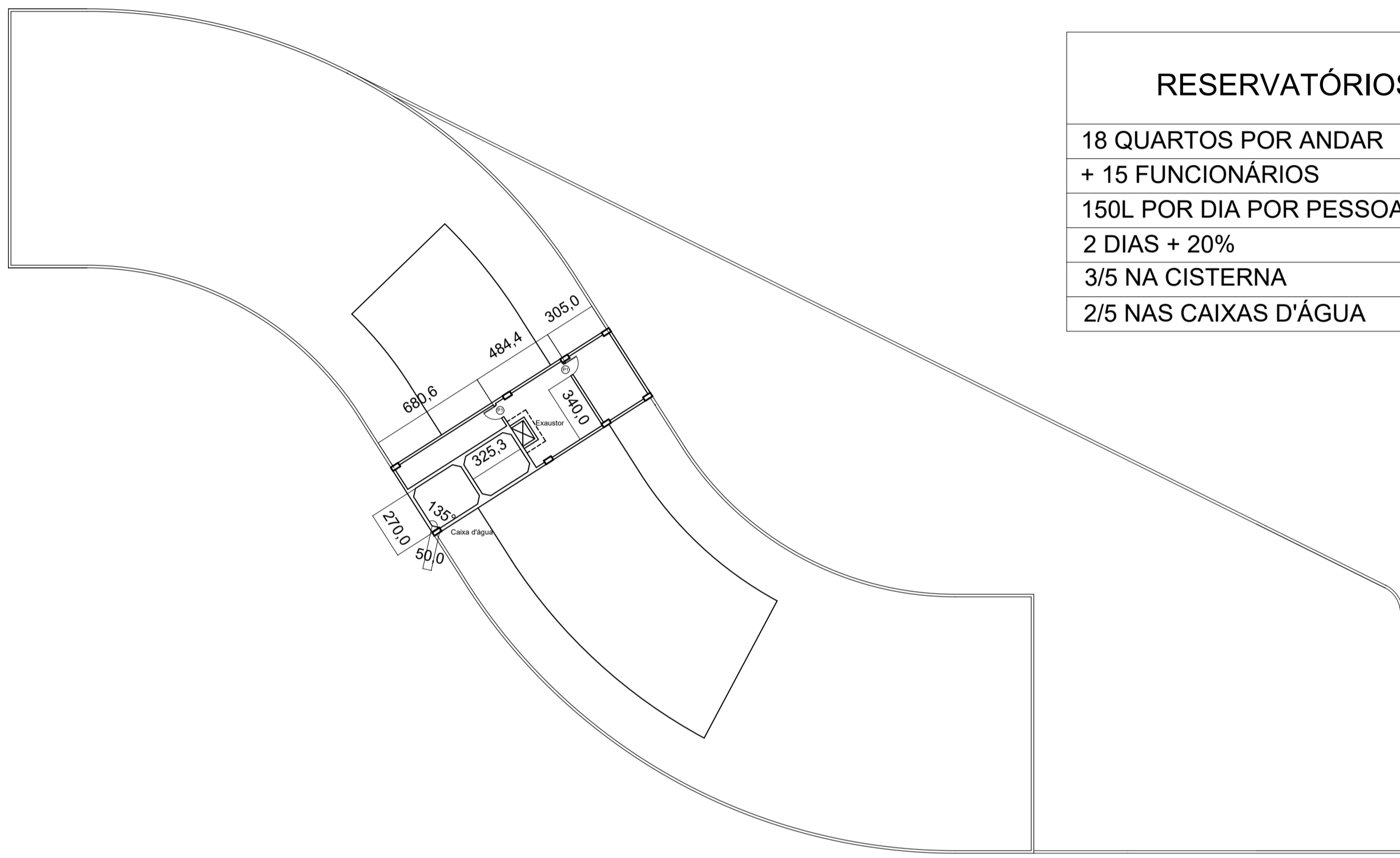
1 PAVIMENTO TIPO COTADO
ESCALA 1:250



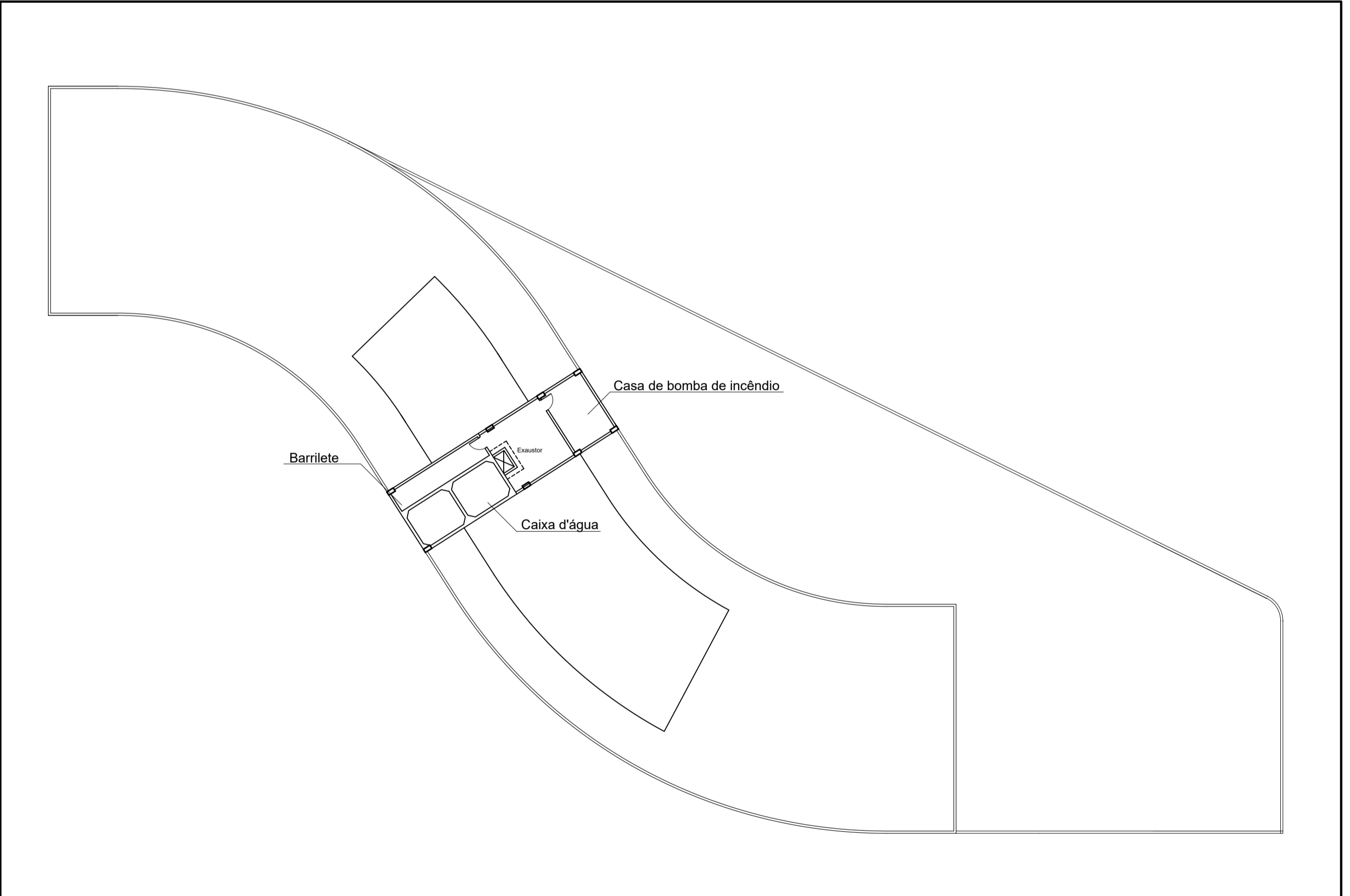
2 PAVIMENTO TIPO MOBILIADO
ESCALA 1:250

QUADRO DE ESQUADRIA			
NOME	LARGURA	ALTURA	PEITORIL
P1	80	210	X

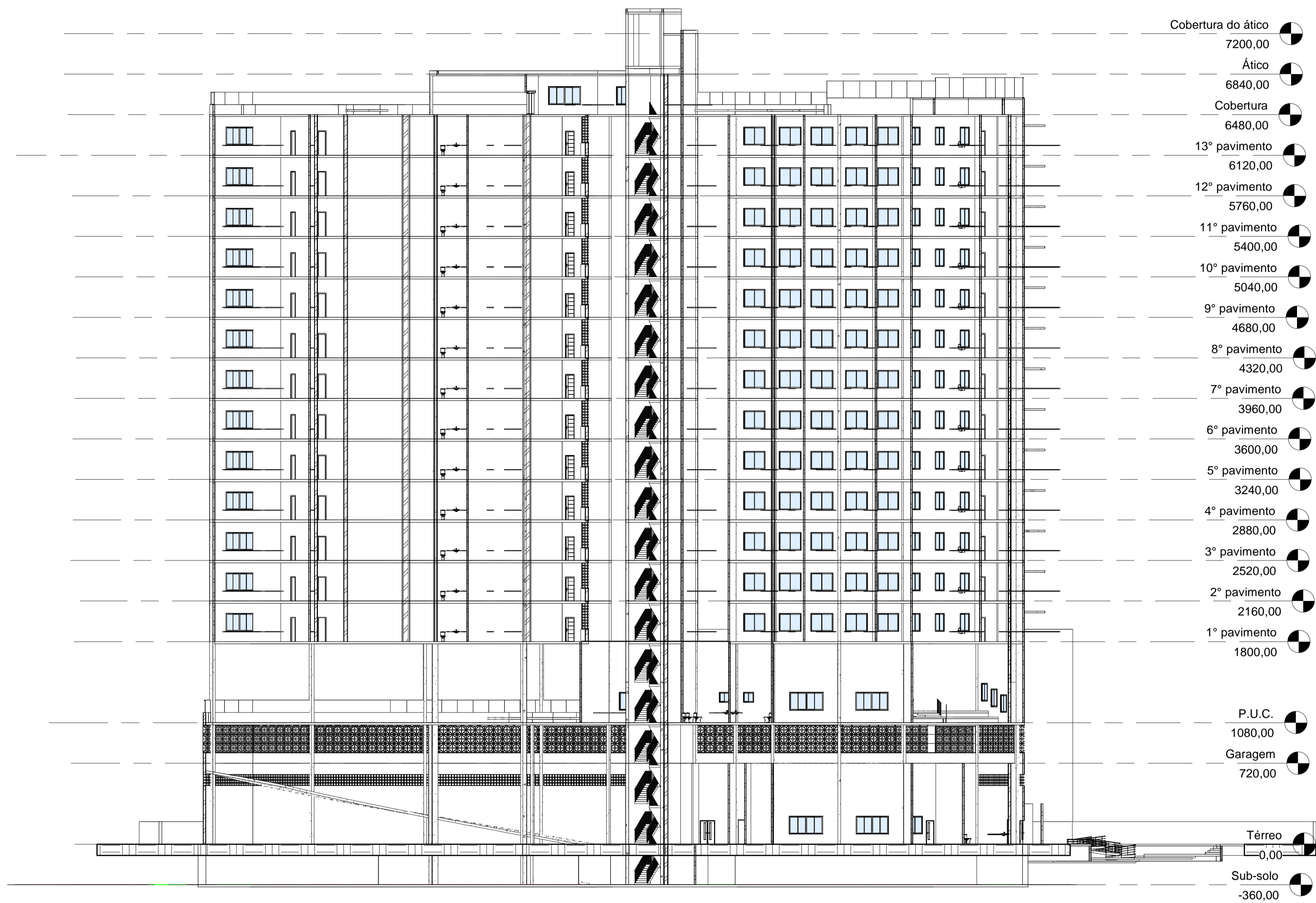
RESERVATÓRIOS DE ÁGUA	
18 QUARTOS POR ANDAR	$18 \times 2 \times 13 = 468$
+ 15 FUNCIONÁRIOS	$468 + 15 = 483$
150L POR DIA POR PESSOA	$150 \times 483 = 72450L$
2 DIAS + 20%	173880L
3/5 NA CISTERNA	104328L
2/5 NAS CAIXAS D'ÁGUA	34776L EM CADA



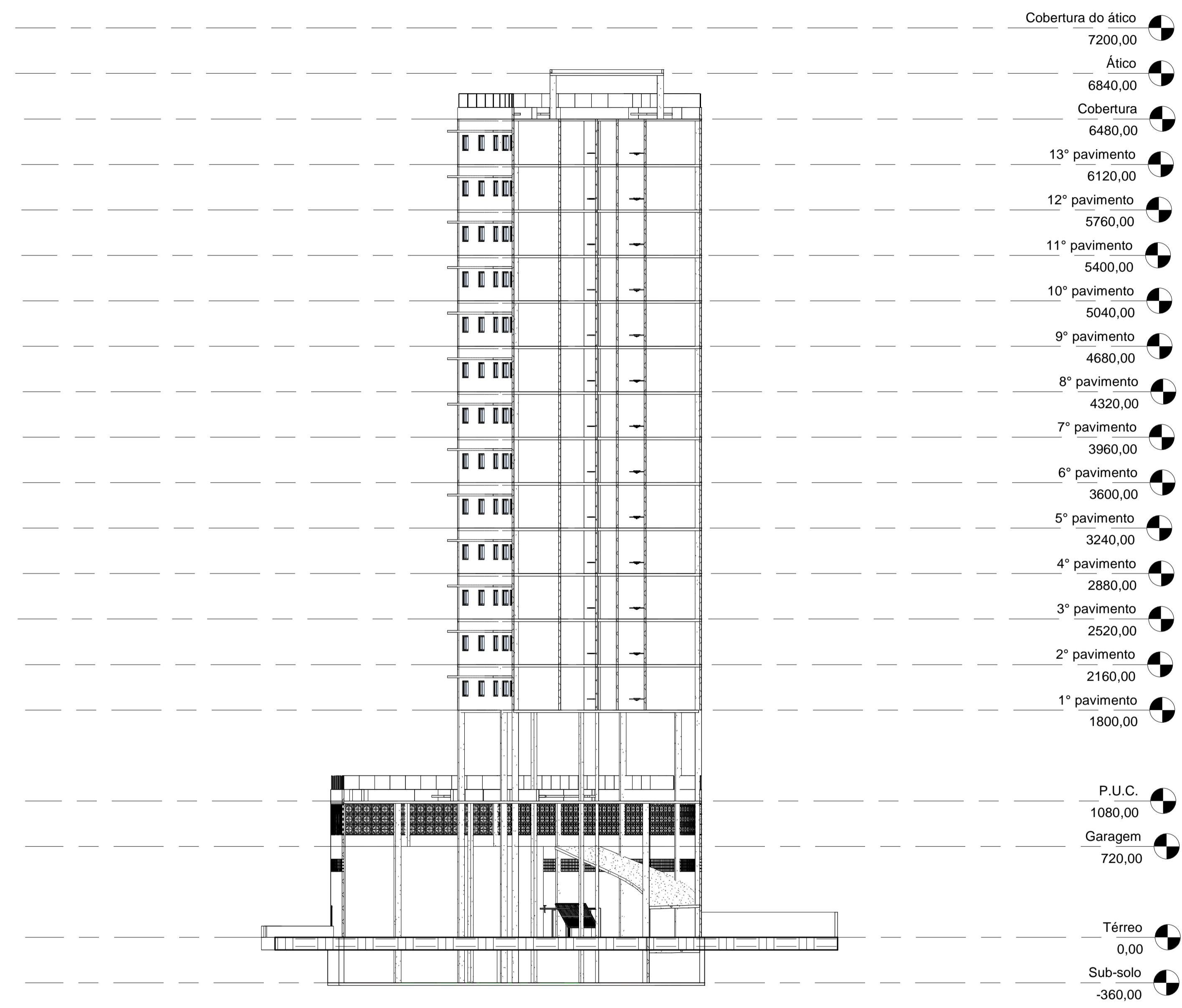
1 **ÁTICO COTADO**
ESCALA 1:250



2 **ÁTICO**
ESCALA 1:250



1 CORTE LONGITUDINAL
1 : 250



1 CORTE TRANSVERSAL
1 : 250



1 Norte
1 : 250

UNIVERSIDADE FEDERAL FLUMINENSE

ESCOLA DE ARQUITETURA E URBANISMO

ALUNO: ERIC LOBO

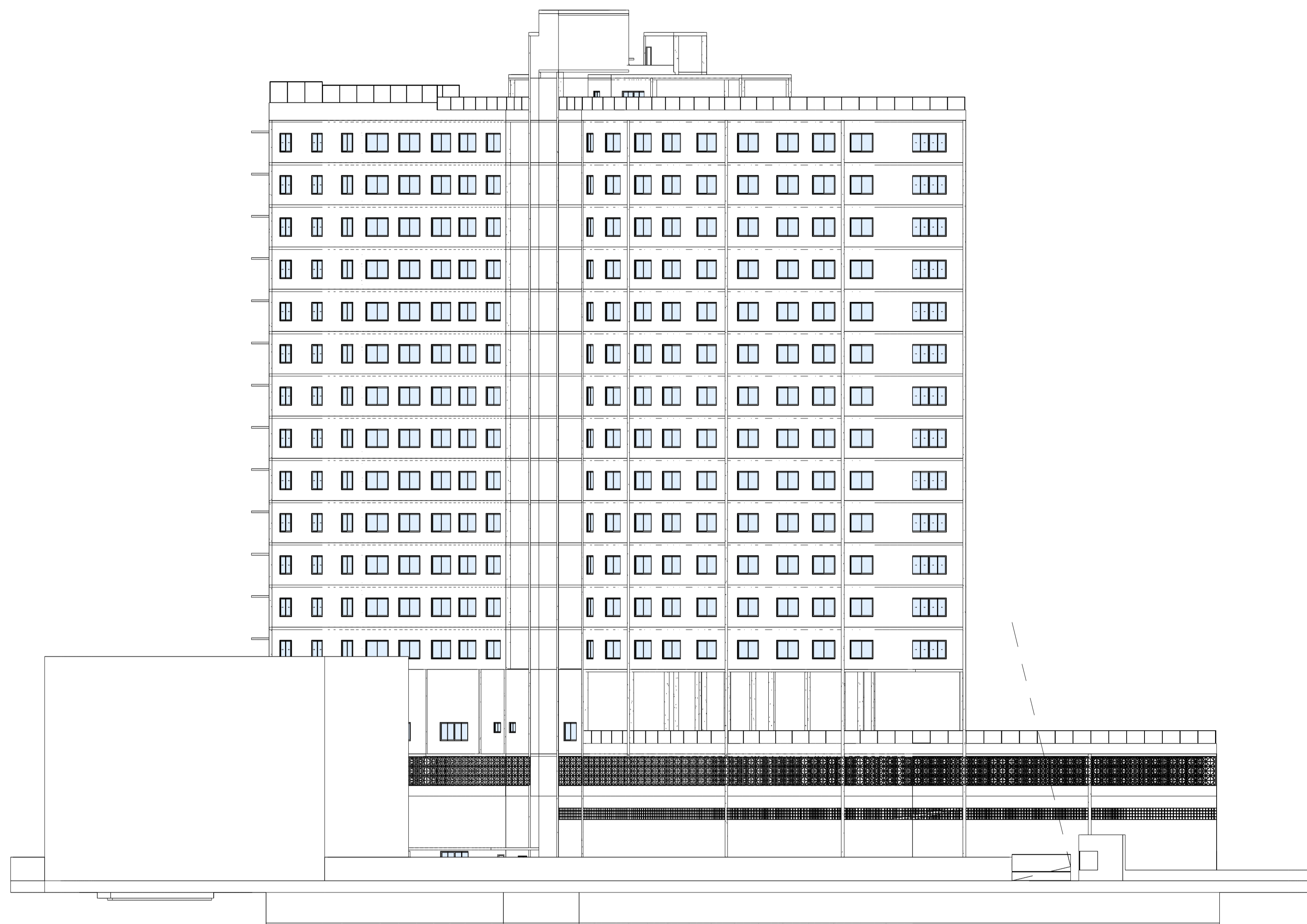
PROF.: GUILHERME

FACHADA NORTE

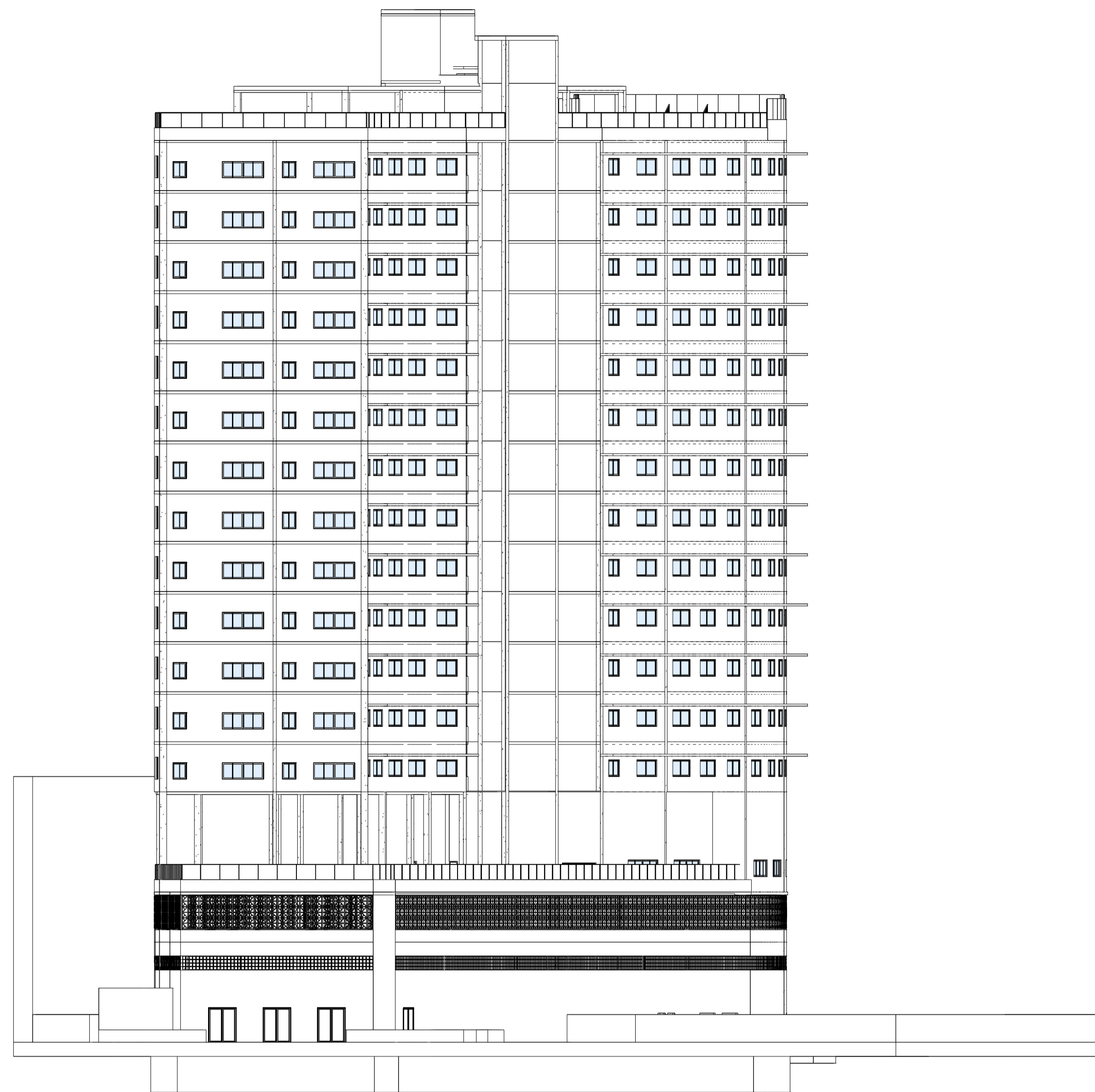
PA III

ESC:1/250

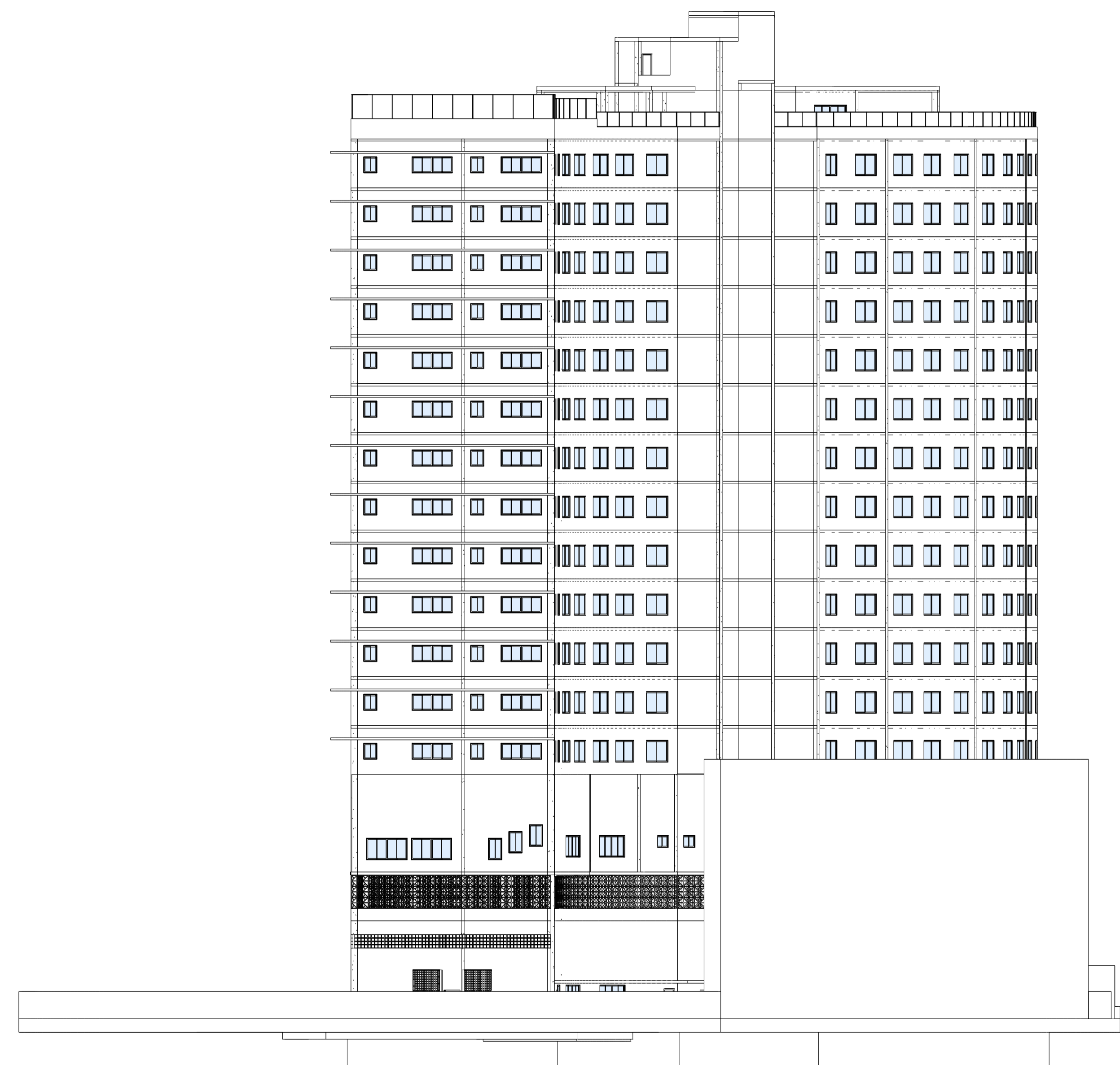
12



1 Sul
1 : 250



1 Leste
1 : 250



2 Oeste
1 : 250



1 VISTA 1
1:1



2 VISTA 2
1:1



3 VISTA 3
1:1



4 VISTA 4
1:1



5 VISTA 5
1:1



6 VISTA 6
1:1